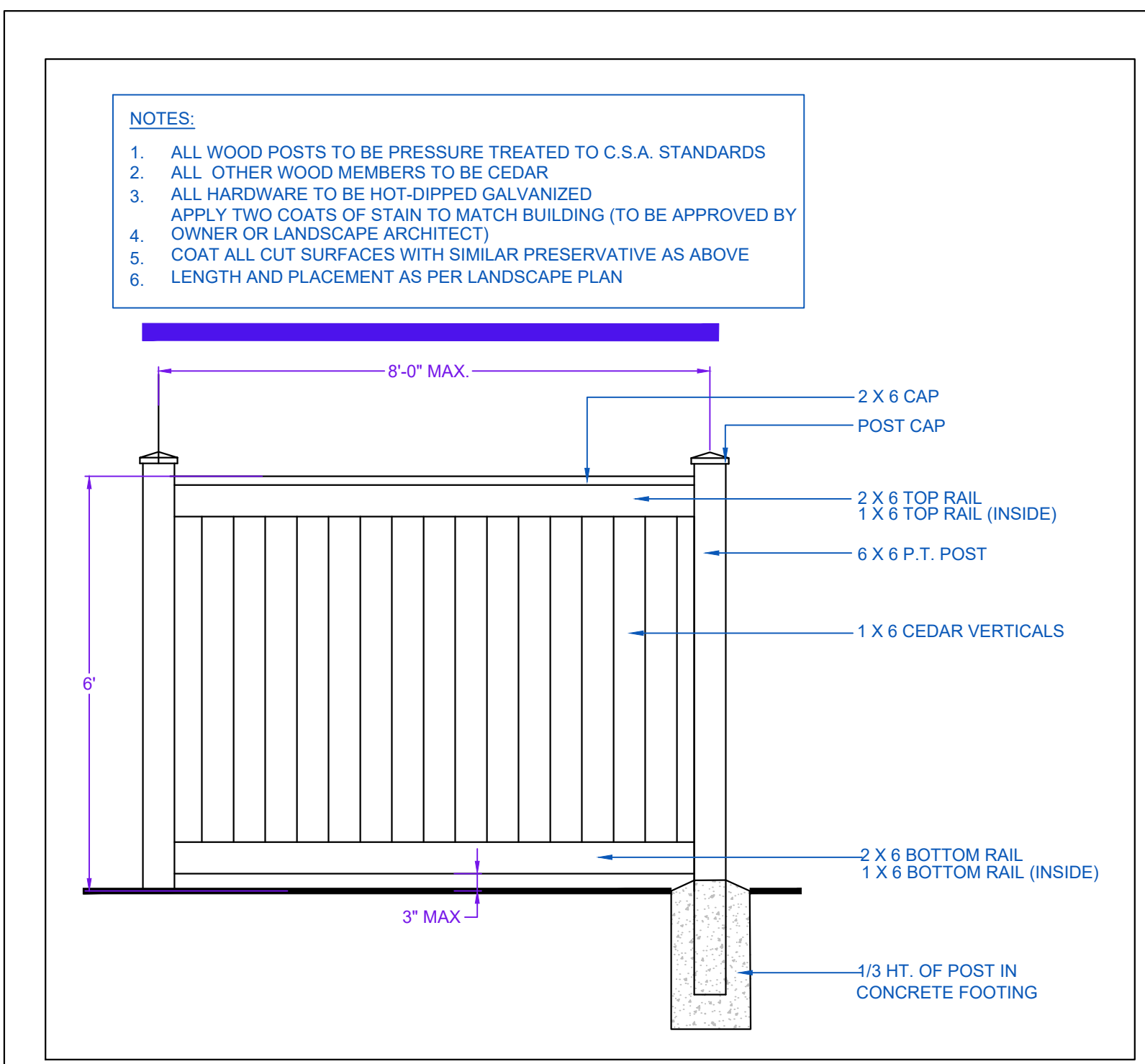
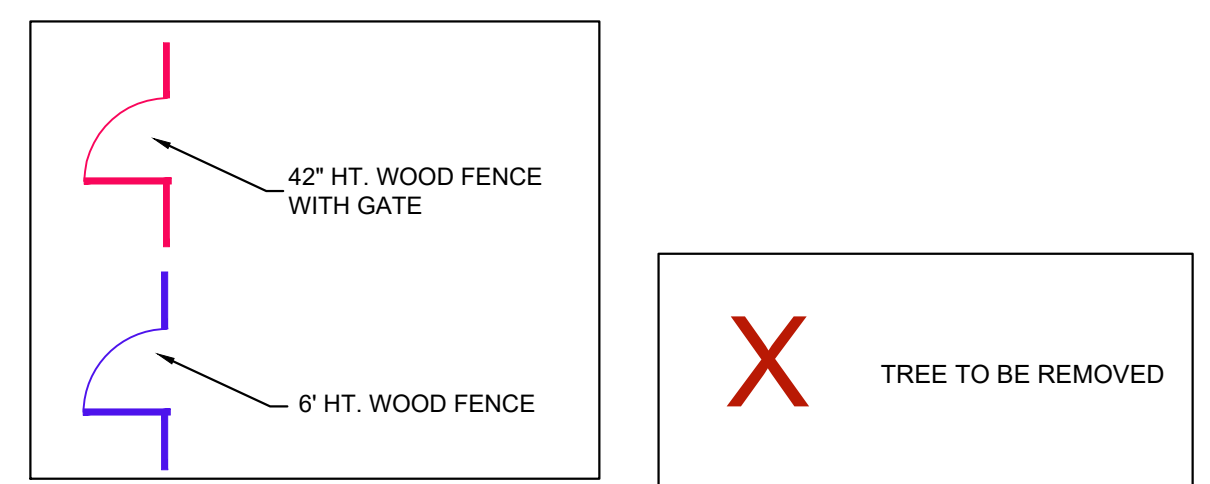


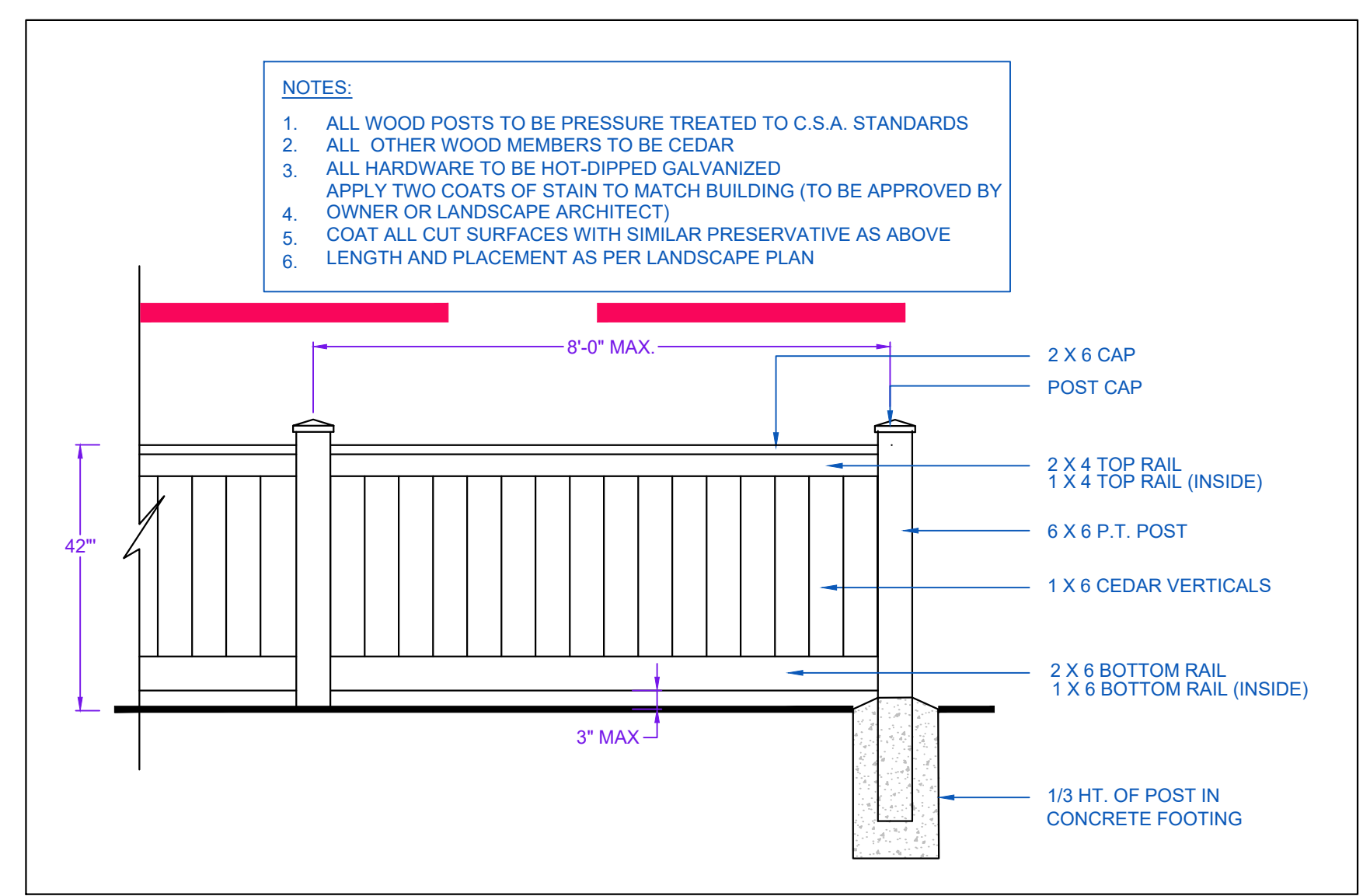
SEAL:

PLANT SCHEDULE				PMG PROJECT NUMBER: 23-087
KEY	QTY	BOTANICAL NAME	COMMON NAME	PLANTED SIZE / REMARKS
TREE				
(A1)	1	ACER PALMATUM 'TWOMBLY'S RED SENTINEL'	COLUMNAR RED JAPANESE MAPLE	2.5M HT; B&B
(A2)	2	ACER PLATANOIDES 'EMERALD QUEEN'	EMERALD QUEEN NORWAY MAPLE	6CM CAL; 2M STD; B&B
(A3)	8	ACER RUBRUM 'KARPICK'	COLUMNAR KARPICK MAPLE	6CM CAL; 2M STD; B&B
(A4)	3	FRAXINUS PENNSYLVANICA 'PRAIRIE SPIRE'	PRAIRIE SPIRE ASH	6CM CAL; 1.8M STD; B&B
SHRUB				
(A5)	4	AZALEA JAPONICA 'HINO CRIMSON'	AZALEA: SINGLE DEEP CRIMSON	#2 POT; 25CM
(A6)	14	FOTHERGILLA MAJOR 'MOUNT AIRY'	MOUNT AIRY FOTHERGILLA	#2 POT; 40CM
(A7)	1	HYDRANGEA PANICULATA 'LIMELIGHT'	LIMELIGHT HYDRANGEA; LIMEGREEN-PINK	#3 POT; 80CM
(A8)	30	PRUNUS LAUROCERASUS 'OTTO LUYKEN'	OTTO LUYKEN LAUREL	#2 POT; 30CM
(A9)	7	RHODODENDRON 'BOW BELLS'	RHODODENDRON; PINK	#3 POT; 30CM
(A10)	22	ROSA MEIDLAND 'FERDY'	MEIDLAND ROSE; CORAL PINK	#2 POT; 40CM
(A11)	127	THUJA OCCIDENTALIS 'SMARAGD'	EMERALD GREEN CEDAR	1.2M HT; B&B
(A12)	1	VIBURNUM P.T. 'SUMMER SNOWFLAKE'	SUMMER SNOWFLAKE VIBURNUM	#7 POT; 80CM
GRASS				
(A13)	23	CAREX OSHIMENSIS 'EVERGOLD'	EVERGOLD JAPANESE SEDGE	#1 POT
(A14)	15	HELICTOTRICHON SEMPERVIRENS	BLUE OAT GRASS	#1 POT
(A15)	41	IMPERATA CYLINDRICA 'RED BARON'	BLOOD GRASS	#1 POT
(A16)	48	JUNCUS EFFUSUS	COMMON RUSH	#1 POT
PERENNIAL				
(A17)	48	IBERIS SEMPERVIRENS 'SNOWFLAKE'	SNOWFLAKE EVERGREEN CANDYTUFT	15CM POT
(A18)	57	VACCINIUM VITIS-IDAEA	LINGONBERRY	#1 POT; 30CM

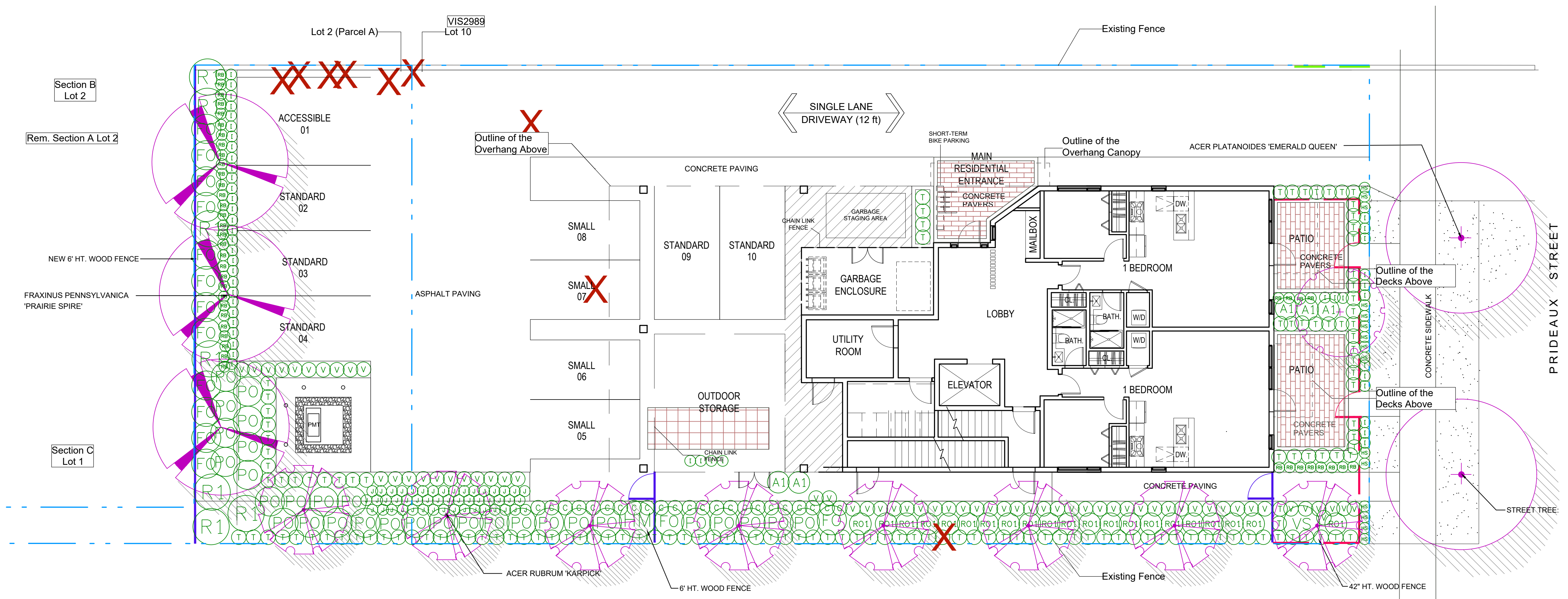
NOTES: * PLANT SIZES IN THIS LIST ARE SPECIFIED ACCORDING TO THE BC LANDSCAPE STANDARD AND CANADIAN LANDSCAPE STANDARD, LATEST EDITION. CONTAINER SIZES SPECIFIED AS PER CNLA STANDARD. BOTH PLANT SIZE AND CONTAINER SIZE ARE THE MINIMUM ACCEPTABLE SIZES. * REFER TO SPECIFICATIONS FOR DEFINED CONTAINER MEASUREMENTS AND OTHER PLANT MATERIAL REQUIREMENTS. * SEARCH AND REVIEW: MAKE PLANT MATERIAL AVAILABLE FOR OPTIONAL REVIEW BY LANDSCAPE ARCHITECT AT SOURCE OF SUPPLY. AREA OF SEARCH TO INCLUDE LOWER MAINLAND AND FRASER VALLEY. * SUBSTITUTIONS: OBTAIN WRITTEN APPROVAL FROM THE LANDSCAPE ARCHITECT PRIOR TO MAKING ANY SUBSTITUTIONS TO THE SPECIFIED MATERIAL. UNAPPROVED SUBSTITUTIONS WILL BE REJECTED. ALLOW A MINIMUM OF FIVE DAYS PRIOR TO DELIVERY FOR REQUEST TO SUBSTITUTE. SUBSTITUTIONS ARE SUBJECT TO BC LANDSCAPE STANDARD AND CANADIAN LANDSCAPE STANDARD - DEFINITION OF CONDITIONS OF AVAILABILITY. * ALL LANDSCAPE MATERIAL AND WORKMANSHIP MUST MEET OR EXCEED BC LANDSCAPE STANDARD AND CANADIAN LANDSCAPE STANDARD LATEST EDITION. * ALL PLANT MATERIAL MUST BE PROVIDED FROM CERTIFIED DISEASE FREE NURSERY. * BIO-SOLIDS NOT PERMITTED IN GROWING MEDIUM UNLESS AUTHORIZED BY LANDSCAPE ARCHITECT.



1 6' HT. WOOD FENCE
1/2" = 1'-0"



2 42" HT. WOOD FENCE
1/2" = 1'-0"



NO.	DATE	REVISION DESCRIPTION	DR.
6	23.OCT.27	SE CORNER WALKWAY	BA
5	23.OCT.16	NEW SITE PLAN	MM
4	23.SEP.16	NEW SITE PLAN	MM
3	23.JULY.20	ADDITIONAL TREE REMOVED	MM
2	23.JULY.06	CIVIL INFO ADDED/ DP ISSUE	MM
1	23.JUN.06	NEW SITE PLAN CLIENT COMMENTS	MM

CLIENT:

PROJECT:

MIXED USE BUILDING
MILTON & PRIDEAUX STREETS
NANAIMO, B.C.

DRAWING TITLE:
LANDSCAPE PLAN

DATE: 23.JUN.01 DRAWING NUMBER:
SCALE: 1/8"=1'-0"
DRAWN: MM
DESIGN: MM
CHK'D: BA

L1
RECEIVED
DP1316 OF 2
Current Planning
2023-NOV-01

SEAL:

6	23.OCT.27	SE CORNER WALKWAY	BA
5	23.OCT.16	NEW SITE PLAN	MM
4	23.SEPT.16	NEW SITE PLAN	MM
3	23.JULY.26	ADDITIONAL TREE REMOVED	MM
2	23.JULY.06	CIVIL INFO ADDED/ DP ISSUE	MM
1	23.JUN.06	NEW SITE PLAN/ CLIENT COMMENTS	MM
NO.	DATE	REVISION DESCRIPTION	DR.

CLIENT:

PROJECT:

MIXED USE BUILDING
MILTON & PRIDEAUX STREETS
NANAIMO, B.C.

DRAWING TITLE:

PLANT IMAGES

DATE: 23.JUN.01 DRAWING NUMBER:
SCALE:
DRAWN: MM
DESIGN: MM
CHK'D: BA

L2
RECEIVED
DP1316 OF 2
2023-NOV-01
Current Planning

PMG PROJECT NUMBER: **23-087**

TREES



ACER PALMATUM 'TWOMBLY'S RED SENTINEL' ACER PLATANOIDES 'EMERALD QUEEN' ACER RUBRUM 'KARPICK' FRAXINUS PENNSYLVANICA 'PRAIRIE SPIRE'

SHRUBS



AZALEA JAPONICA 'HINO CRIMSON' FOTHERGILLA MAJOR 'MOUNT AIRY' HYDRANGEA PANICULATA 'LIMELIGHT' PRUNUS LAUROCERASUS 'OTTO LUYKEN' RHODODENDRON 'BOW BELLS' ROSA MEIDLAND 'FERDY' THUJA OCCIDENTALIS 'SMARAGD'

GRASSES



CAREX OSHIMENSIS 'EVERGOLD' IMPERATA CYLINDRICA 'RED BARON' JUNCUS EFFUSUS HELICTOTRICHON SEMPERVIRENS

GROUND COVERS



IBERIS SEMPERVIRENS 'SNOWFLAKE' VACCINIUM VITIS-IDAEA